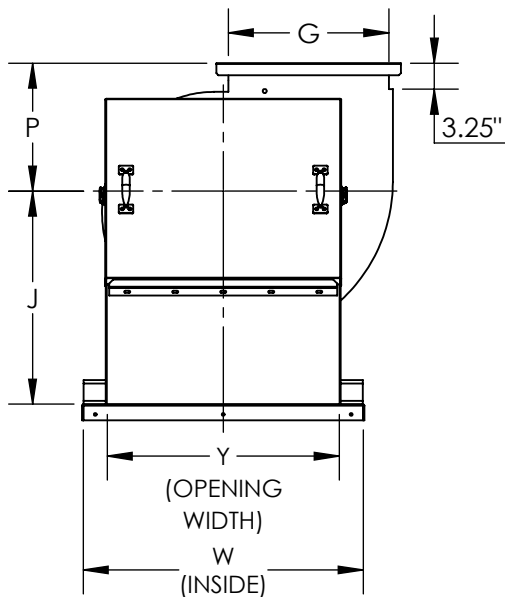
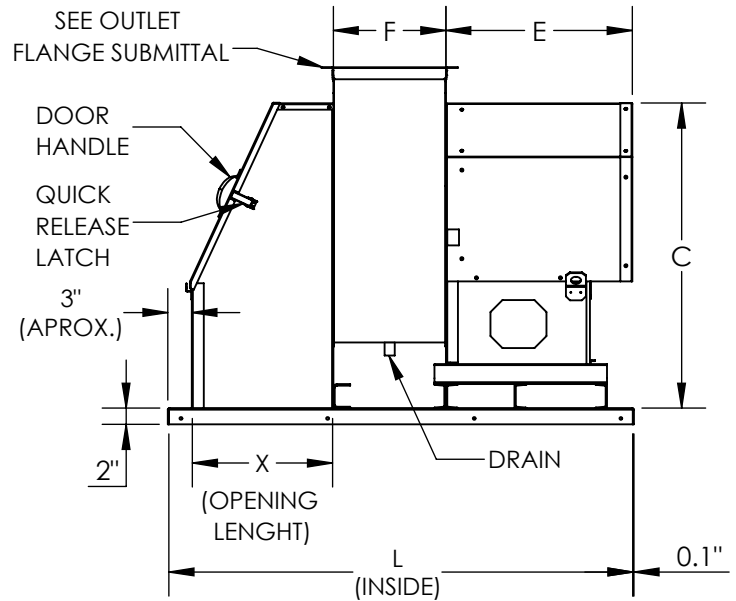


UVS2, CLASS-2, ARRANGEMENT- 4
 INLET BOX AND CURB CAP, SIZES 122-270



INLET VIEW



DRIVE SIDE VIEW

STANDARD CONSTRUCTION:

1. Discharge: UB
2. Rotation: CW/CCW (CW shown above)
3. Steel Wheel
4. Welded and Coated Housing and Pedestal
5. Welded and Coated Inlet Box and Curb Cap
6. Weather Cover
7. Housing Drain & Plug - 3/4" NPT
8. Flanged Outlet

OPTIONAL ACCESSORIES:

1. Speed Controllers (shipped loose only)
2. Shaft Seal
3. Outlet Screen
4. Disconnect Switch
5. Grease Containment
6. Curb
7. Outlet Stack
8. Spark Resistant Const. (Type A/B/C)
9. Piezo Ring
10. Pressure Transducer
11. Access Door (Bolted or Hinged)

DIMENSIONAL DATA

| SIZE | C | E | "F" (WIDTH) | | | | | | | | | | |
|------|-------|-------|-------------|-------|-------|-------|-------|-------|-------|-------|-------|-------|-------|
| | | | 100% | 95% | 90% | 85% | 80% | 75% | 70% | 65% | 60% | 55% | 50% |
| 122 | 29.38 | 18.75 | 9.88 | 9.75 | 9.56 | 9.44 | 9.25 | 9.06 | - | - | - | - | - |
| 135 | 30.25 | 18.75 | 10.88 | 10.75 | 10.56 | 10.38 | 10.19 | 10 | 9.81 | - | - | - | - |
| 150 | 32.63 | 18.75 | 12.06 | 11.88 | 11.69 | 11.5 | 11.31 | 11.06 | 10.88 | 10.69 | 10.5 | - | - |
| 165 | 35.13 | 23.31 | 13.25 | 13.06 | 12.81 | 12.63 | 12.44 | 12.19 | 11.94 | 11.75 | 11.5 | 11.31 | - |
| 182 | 38.13 | 23.31 | 14.06 | 13.88 | 13.63 | 13.38 | 13.09 | 12.88 | 12.63 | 12.38 | 12.13 | 11.88 | 11.63 |
| 200 | 41.50 | 23.31 | 15.38 | 15.13 | 14.88 | 14.63 | 14.38 | 14.13 | 13.88 | 13.5 | 13.25 | 13 | 12.75 |
| 222 | 45.06 | 23.31 | 17.13 | 16.88 | 16.63 | 16.25 | 16.00 | 15.75 | 15.38 | 15.13 | 14.75 | 14.5 | 14.13 |
| 245 | 48.50 | 25.75 | 18.75 | 18.50 | 18.13 | 17.88 | 17.50 | 17.13 | 16.88 | 16.5 | 16.13 | 15.88 | 15.63 |
| 270 | 52.63 | 28.63 | 20.63 | 20.38 | 20 | 19.63 | 19.38 | 18.88 | 18.5 | 18.13 | 17.75 | 17.38 | 17.13 |

DIMENSIONAL TABLE CONTINUED ON NEXT PAGE...

NOTES:

ALL DIMENSIONS ARE IN INCHES, WEIGHTS ARE APPROXIMATE AND DOES NOT INCLUDE DRIVES OR ACCESSORIES.



DATE:

TAG:

JOB:

PROJECT:

COMPANY:

SALES PERSON:

UVS2, CLASS-2, ARRANGEMENT- 4
INLET BOX AND CURB CAP, SIZES 122-270

DIMENSIONAL DATA

| SIZE | J | L | P | W | X | Y | MAX. WT. (lbs) | MAX. RPM | MAX. MTR |
|------------|-------|-------|-------|-------|-------|-------|-------------------|-------------|-------------|
| 122 | 21.00 | 45.00 | 13.50 | 25.00 | 13.00 | 19.00 | 257 | 4650 | 184T |
| 135 | 21.38 | 46.00 | 14.25 | 28.00 | 13.00 | 22.00 | 284 | 4300 | 215T |
| 150 | 23.00 | 47.00 | 14.75 | 30.00 | 13.00 | 24.00 | 316 | 3850 | 215T |
| 165 | 24.63 | 56.00 | 15.50 | 33.00 | 16.00 | 27.00 | 394 | 3500 | 256T |
| 182 | 26.63 | 58.00 | 16.00 | 35.00 | 17.50 | 29.00 | 450 | 3000 | 256T |
| 200 | 28.75 | 63.00 | 17.25 | 38.00 | 20.50 | 32.00 | 536 | 2750 | 256T |
| 222 | 31.25 | 66.00 | 18.75 | 42.00 | 22.00 | 36.00 | 624 | 2450 | 256T |
| 245 | 33.75 | 70.00 | 20.25 | 45.00 | 24.00 | 39.00 | 702 | 2200 | 286T |
| 270 | 36.75 | 72.00 | 22.25 | 48.00 | 22.50 | 42.00 | 810 | 2000 | 324T |

NOTES:

ALL DIMENSIONS ARE IN INCHES, WEIGHTS ARE APPROXIMATE AND DOES NOT INCLUDE DRIVES OR ACCESSORIES.

REVISION:

FORM:

REPLACES: